

Dog Licenses



Tempest's Dog Licenses system is one of a series of integrated property and bylaw control systems for Local Government. The system allows you to track both dog licenses and owner information. It allows for payment tracking, license generation and year end renewal of licenses. Like other Tempest products, the Dog License module is fully integrated with the Tempest Land module. This allows you to retrieve dog licenses by civic address or by property owner. Global address corrections will automatically update owner information in the Dog Licenses module.

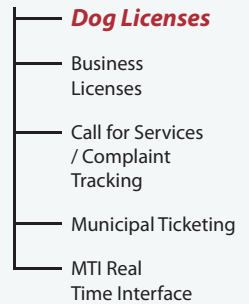


The Dog Licenses system acts as a subledger to your GL, enabling you to perform a transaction upload of all payment, credit and project revenue transactions. You can easily produce reports for manual input into your GL. The system is also fully integrated with Cash Collections for payment entry and tag assignment at the time of payment. The payment and tag can be assigned by the cashier and the account set up later, speeding up service to the customer. The Tag Inventory feature provides full tracking of distributed tag books which prevents loss and duplication of tags.

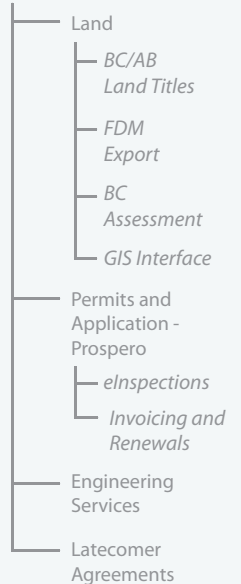
Benefits

- Improve customer service by allowing multiple dogs on each account
- Reduce time and effort for clerks with a streamlined renewal process which also results in greater revenue
- As a result of seamless integration with Tempest's Land module, lost dogs can be tracked more efficiently
- Increase revenues with the ability to have a multi-tiered rate structure
- Improve community safety through identification of dangerous dogs
- Save time issuing tags directly at the cash till when payment is made
- Time can be saved by customers entering their own dog payments online

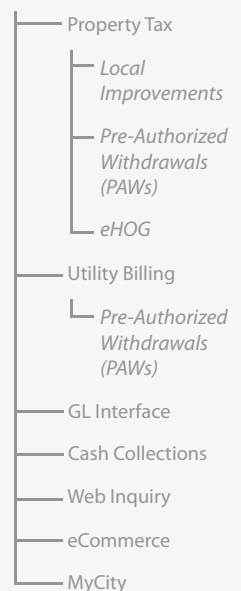
Bylaws & Ticketing



Community Development



Revenue Systems Management



Features



- Integrates with Land Management for owner names and civic addresses
- Allows separate mailing addresses for civic owners
- Supports multi-jurisdictional licensing
- Supports multiple dogs per owner
- Maintains subledger of payments and charges
- Tracks tags over multiple years
- Prints renewal notices
- Supports multiple fee structures
- Supports discounts and adjustments
- Provides complete tag inventory for tracking tag distribution
- Allows for 'inquiry only' security
- Supports remote input for multiple departmental distribution and payment
- Supports maintenance of comments
- Integration with Land module helps find lost dogs
- Identifies dangerous dogs and additional fees for dangerous breeds/dogs
- Maintains history of moved and deceased dogs
- Supports all file formats as attachments to a license record (documents, images, etc.)
- Archives all historical bills for future reference
- Supports optional integration with electronic billing through *epost*™
- Integrates with Cash Collections for payment entry
- Allows for Tag issuance at cash till
- Allows for payments of replacement tags at till
- Allows for payments of new dogs on existing accounts at till
- Allows for payments of new accounts at till

The screenshot displays the 'Dog Licences' software interface for account number 9313 and dog name COOPER. The interface includes a menu bar (Application, Edit, Account, Dog, Batch, Processes, Options, Tools, Reports) and a toolbar with various icons. The main window is divided into several sections:

- Account Information:** Account 9313, Active, JENSEN, JANET.
- Dog Information:** Dog COOPER, Status Active, Sex NM, Breed SHIH TZU, Charge NM, Colour BLACK,WHITE, Exempt and Dangerous checkboxes.
- Tag History Table:**

Tag	Assigned	Year
1385	Feb 5, 2009	2009
943	Feb 23, 2008	2008
2418	Feb 6, 2007	2007
3985	Feb 9, 2006	2006
4517	Feb 17, 2005	2005
6541	Nov 17, 2004	2004

- Payment History Table:**

Date	Batch	Year	Description	Amount	Disc.	Receipt/Note
			ACCOUNT BALANCE	17.00		
Dec 8, 2009	2338	2010	Levy	17.00		Neutered Male
Feb 25, 2009	29045	2009	Payment	-17.00	0.00	1/TOTAL PET
Dec 29, 2008	2090	2009	Levy	17.00		Neutered Male
Feb 22, 2008	25274	2008	Payment	-17.00	0.00	1/TOTAL PET
Jan 3, 2008	1895	2008	Levy	17.00		Neutered Male
Feb 12, 2007	21368	2007	Payment	-17.00	0.00	6/TOTAL PET
Jan 4, 2007	1731	2007	Levy	17.00		Neutered Male
Feb 21, 2006	17965	2006	Payment	-17.00	0.00	1/TOTAL PET
Dec 15, 2005	1492	2006	Levy	17.00		Neutered Male
Mar 3, 2005	14676	2005	Payment	-17.00	0.00	23/TOTAL PET

Record retrieved: Last Modified Nov 17, 2004 By CWHITE